

# USB Tape 1 PE

acrylic adhesive tape

The professional adhesive tape



1. Polyethylene
2. Acrylic adhesive
3. Woven polyester backing
4. Acrylic adhesive
5. Silicone liner

1. 2. 3. 4. 5.



Art. 02040160

## ADVANTAGES

- Super strong bonding
- Guaranteed against ageing
- Solvent free
- Does not impair the functional membrane of breathable barriers and membranes
- Guarantees a seal against water, air and wind
- Use instead of heat sealing
- Universal use (for breathable barriers and membranes, insulation, wooden structures, etc.)
- Easy and quick to lay



**Product description:** professional, universal polyethylene adhesive tape with woven backing, coated with highly adhesive acrylic glue. This tape has been specially produced for gluing USB Riwega membranes and barriers with the purpose of providing a seal against water, air, wind, vapour and noise on discontinuities in roofs and walls.

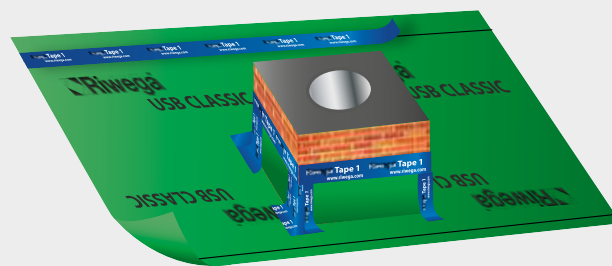
**Use:** for gluing USB Riwega membranes and barriers at the overlaps or directly onto the lateral surfaces of roof windows, chimneys, vents, etc. as well as for sealing wooden wall joints (X-lam) or OSB boards. Thanks to its water-resistant polyethylene surface, USB TAPE 1 PE is particularly recommended for external use.

**Application:** identify all surfaces to be bonded, make sure that they are dry and free from dust and grease (alternatively, use USB PRIMER to clean the surfaces); after cutting the desired length of tape, remove the protective liner, lay the adhesive tape onto the overlap of the required surfaces and press firmly along the entire surface of the adhesive tape using the roller so that the adhesive sets properly. The acrylic glue bonds immediately but develops its maximum adhesive strength over 24 hours. The temperature limit for the acrylic glue to provide an immediate minimal bond is -10°C; therefore, the lower the temperature, the lower the immediate bonding time; in any case, once the tape is laid, the adhesive process develops as the temperature increases, until it reaches its maximum bonding seal..

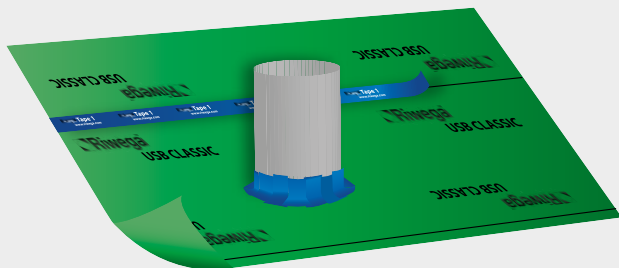
**Sealing with USB Tape 1 PE - so easy a child could do it!** Thanks to the Characteristics mentioned, **USB Tape 1 PE** adhesive tape is considered to be the ideal, all-round product for achieving a perfect seal quickly and easily with excellent results anywhere in a building.



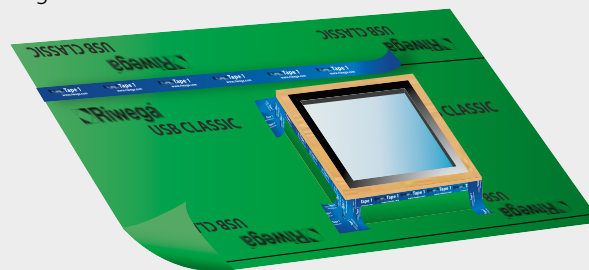
Sealing of USB Riwega breathable membranes against air, water, wind and vapour on roof overlaps



Sealing of USB Riwega breathable membranes against air, water, wind and vapour on roof overlaps and around chimney edges



Sealing of USB Riwega breathable membranes against air, water, wind and vapour on roof overlaps and around vent edges



Sealing of USB Riwega breathable membranes against air, water, wind and vapour on roof overlaps and around window edges

Sealing of USB Riwega breathable membranes against air, water, wind and vapour on wall overlaps



## Technical sheet:

Characteristics	USB Tape 1 PE
Measurements	60 mm x 25 m
Colour	blue
Adhesive	Solvent, VOC and emollient free acrylic based adhesive
Thickness	0,31 mm ± 5%
Adhesive weight	240 g/m <sup>2</sup> ± 10%
Adhesive backing	Tape with PE surface reinforced with woven polyester backing
Covering material	Silicone liner
Adhesive strength (AFERA 5001)	> 25 N/25 mm
Application temperature (Product)	from +10°C
Application temperature (Air)	from -10°C
Application temperature	from -40°C from to + 80°C
Adhesion reaction time	Immediate / maximum adhesion in 24 hours
UV stability	4 months
Packaging	Boxes of 10 rolls (10 x 25 m)
Storage	Store in a clean dry place for a maximum of 24 months

Adhesive with excellent adhesive strength, moisture-proof, does not dry out and/or change. The technical data provided on this sheet are average values taken from test samples. Riwega Srl does not accept any liability for the use of this product other than that for which it is intended; any other uses must be approved by the technical department. Our products undergo continuous quality checks according to current DIN regulations. © Reprinting, even if partial, is only permitted with the written authorization of Riwega srl, Egna.